

# hartte®



Product catalogue 2016/2017

# Standard electric strikes

## HARTTE

### S-series

- fail-secure (NC normally closed) or fail-safe (NO normally open)
- symmetric housing
- adjustable latch up to 4mm
- size: width 20,5mm, height 75mm, depth 28,5mm, size of version with door status monitoring (M): 20,5mm x 81,8mm x 28,5mm
- mechanical strength – break-in resistance 3500 N (350kg)
- mechanical strength – opening cycles 200.000
- DIN-left and DIN-right doors

Models of HARTTE S-series:

- normally closed
  - with hold-open function
  - with mechanical unlocking
  - with hold-open and mechanical unlocking function
  - NO (normally open)
  - low-consumption
  - for continuous working 100%ED
- Above models available with door status monitoring (M) and/or varistor (V).



Index	S12U	S12N	S12R	S24U	S24N	S24R
<b>Voltage (V)</b>	12AC/DC	12DC	12DC NO	24AC/DC	24DC	24DC NO
<b>Voltage tolerance (V)</b>	AC 10-14/ DC10-14	11-14	7-12	AC 21-26/ DC 18-26	20-26	18-26
<b>Resistance (Ohm)</b>	21	38	63	130	150	250
<b>Power consumption AC (mA)</b>	410	-	-	130	-	-
<b>Power consumption DC (mA)</b>	570	320	200	190	150	100
<b>Max. preload AC (N)</b>	98	-	-	98	-	-
<b>Max. preload DC (N)</b>	18	12	10	20	13	10
<b>Loudness (1=low, 2=medium, 3=high)</b>	2	1	1	1	1	1
<b>Continuously powered (100%ED)</b>	no	option	yes	no	option	yes

# Narrow electric strikes

## HARTTE

### XS-SERIES

- fail-secure (NC normally closed) or fail-safe (NO normally open)
- symmetric housing
- adjustable latch up to 3mm
- radial shape of the latch – when opening the latch is not going beyond the outline of electric strike
- size: width 16,2mm, height 67mm, depth 28mm, size of version with door status monitoring (M): 16,2mm x 72,6mm x 28mm
- mechanical strength – break-in resistance 3000 N (300kg)
- mechanical strength – opening cycles 200 000
- DIN-left and DIN-right doors

Models of HARTTE XS-series:

- normally closed
  - with hold-open function
  - with mechanical unlocking
  - with hold-open and mechanical unlocking function
  - NO (normally open)
  - low-consumption
  - for continuous working 100%ED
  - with strenghten spring for doors with latch pressing
- Above models available with door status monitoring (M) and/or varistor (V).  
XS-B-series recommended for doors with lock latch pressing on electric strike



XS-C-series with lock latch guide ensuring smooth slide of latch bolt eliminates necessity of wide punching for electric strike in door frames.



Index	XS06A	XS12U	XS12N	XS12R	XS24U	XS24N	XS24R
<b>Voltage (V)</b>	12AC	12AC/DC	12DC	12DC NO	24AC/DC	24DC	24DC NO
<b>Voltage tolerance (V)</b>	7-14	AC 10-14 DC 10-14	9-14	9-14	AC 21-26 DC 16-26	20-26	18-26
<b>Resistance (Ohm)</b>	8	17,6	60	60	60	230	230
<b>Power consumption AC (mA)</b>	1100	480	-	-	280	-	-
<b>Power consumption DC (mA)</b>	-	680	200	200	400	104	104
<b>Max. preload AC (N)</b>	120	100	-	-	120	-	-
<b>Max. preload DC (N)</b>	-	70	68	20	70	54	20
<b>Loudness (1=low, 2=medium, 3=high)</b>	3	2	1	1	2	1	1
<b>Continuously powered (100%ED)</b>	no	no	option	yes	no	no	yes

# Fire protection electric strikes

## HARTTE

### SHD-series

- fire-rate EI60
- fail-secure (NC normally closed) or fail-safe (NO normally open)
- symmetric housing
- latch adjustable up to 4mm
- size: width 20,5mm, height 75mm, depth 28,5mm,
- size of version with door status monitoring: width 20,5mm x height 81,8mm x depth 28,5mm
- mechanical strength – break-in resistance 3500 N (350 kg)
- mechanical strength – opening cycles 200.000
- DIN-left and DIN-right doors

Models of HARTTE SHD-series::

- normally closed
  - normally open (mounting on additional lock)
  - normally closed low consumption
- Above models available also with door status monitoring (M) and/or varistor (V)



Index	SHD12U	SHD12N	SHD12R	SHD24U	SHD24N	SHD24R
<b>Voltage (V)</b>	12AC/DC	12DC	12DC NO	24AC/DC	24DC	24DC NO
<b>Voltage tolerance (V)</b>	10-14	10-14	10-14	AC 21-26 DC 18-26	20-26	18-26
<b>Resistance (Ohm)</b>	21	38	57	130	150	250
<b>Power consumption AC (mA)</b>	410	-	-	130	-	-
<b>Power consumption DC (mA)</b>	570	320	210	190	150	100
<b>Max. preload AC (N)</b>	98	-	-	98	-	-
<b>Max. preload DC (N)</b>	18	12	10	20	13	10
<b>Loudness (1=low, 2=medium, 3=high)</b>	2	1	1	1	1	1
<b>Continuously powered (100%ED)</b>	no	option	yes	no	option	yes

# Fire protection electric strikes

## HARTTE

### SF-series

- fire-rate EI120
- fail-secure (NC normally closed) or fail-safe (NO normally open)
- symmetric housing
- latch adjustable up to 4mm
- size: width 20,5mm, height 75mm, depth 28,5mm, size of version with door status monitoring: width 20,5mm x height 81,8mm x depth 28,5mm
- mechanical strength – break-in resistance 3500 N (350 kg)
- mechanical strength – opening cycles 200.000
- DIN-left and DIN-right doors

Models of HARTTE SF line:

- normally closed
  - normally open (mounting on additional lock)
  - normally closed low consumption
- Above models available with door status monitoring (M) and/or varistor (V)



Index	SF12U	SF12N	SF12R	SF24U	SF24N	SF24R
<b>Voltage (V)</b>	12AC/DC	12DC	12DC NO	24AC/DC	24DC	24DC NO
<b>Voltage tolerance (V)</b>	10-14	10-14	10-14	AC 21-26 DC 18-26	20-26	18-26
<b>Resistance (Ohm)</b>	21	38	57	130	150	250
<b>Power consumption AC (mA)</b>	410	-	-	130	-	-
<b>Power consumption DC (mA)</b>	570	320	210	190	150	100
<b>Max. preload AC (N)</b>	98	-	-	98	-	-
<b>Max. preload DC (N)</b>	18	12	10	20	13	10
<b>Loudness (1=low, 2=medium, 3=high)</b>	2	1	1	1	1	1
<b>Continuously powered (100%ED)</b>	no	option	yes	no	option	yes

# Standard electric holding magnets

## HARTTE

### MG300-series



- fail safe (NO)
- holding force 1800N (180kg) or 3000 N (300kg)
- no residual magnetism
- no push-pin moving armature plate away from the maglock
- for surface (S) or mortise (M) mounting
- MOV surge protection built-in
- resistant to corrosion

Index	MG300.180SR	MG300.180MR	MG300.300MR	MG300.300M	MG300.300SL	MG300.300S
<b>Holding force (N)</b>	1800	1800	3000	3000	3000	3000
<b>Voltage (V)</b>	12/24V DC	12/24V DC	12/24V DC	12/24V DC	12/24V DC	12/24V DC
<b>Power consumption (mA)</b>	350/175	350/175	500/250	500/250	500/250	500/250
<b>Dimensions (mm)</b>	166x39x20,9	143x34x22	187,5x38,5x26,5	188x39x27	268x48x25,5	268x48x25,5
<b>Weight (kg)</b>	1,8	1,8	2,0	2,0	2,0	2,0
<b>Locking monitoring</b>	yes	yes	yes	no	yes(LED)	No
<b>Door monitoring</b>	no	no	no	no	no	no
<b>Mounting type</b>	surface	mortise	mortise	mortise	surface	surface

# High security electric holding magnets

## HARTTE

### MG500-SERIES



- fail safe (NO)
- holding force 5300 N (530kg)
- no residual magnetism
- no push-pin moving armature plate away from the maglock
- for surface (S) mounting
- MOV surge protection built-in
- resistant to corrosion

Index	MG500.S	MG500.SL	MG500.SCL	MG500.2S
<b>Holding force (N)</b>	5300	5300	5300	2x5300
<b>Voltage (V)</b>	12/24V DC	12/24V DC	12/24V DC	12/24V DC
<b>Power consumption (mA)</b>	500/250	500/250	500/250	2x500/250
<b>Dimensions (mm)</b>	268x73x40,8	268x73x40,8	268x73x40,8	536x73x40,8
<b>Weight (kg)</b>	4,0	4,0	4,0	9,0
<b>Locking monitoring</b>	no	yes(LED)	yes(LED)	no
<b>Door monitoring</b>	no	no	yes(chip)	no
<b>Mounting type</b>	surface	surface	surface	surface

# Waterproof holding magnets

## HARTTE

### MSS-series

- fail-safe (NO)
- holding force from 2000N (200kg), 4100N (410kg) or 7500 N (750kg)
- no residual magnetism
- no push-pin moving armature plate away from the maglock
- for surface (S) mounting
- MOV surge protection built-in
- resistant to corrosion and atmosphere conditions
- stainless steel housing AISI316
- waterproof IP67



Index	MSS.200S	MSS.400SSR	MSS.400SFR	MSS.750SSR	MSS.750SFR	MSS.750SR
<b>Holding force (N)</b>	2000	4100	4100	7500	7500	7500
<b>Voltage (V)</b>	12/24V DC	12/24V DC	12/24V DC	12/24V DC	12/24V DC	12/24V DC
<b>Power consumption (mA)</b>	400/200	400/200	400/200	500/250	500/250	500/250
<b>Dimensions (mm)</b>	162x24,3x31,5	220x46x31,6	220x46x31,6	224x63x44	225x63,4x45	224x63,4x45
<b>Weight (kg)</b>	1,0	3,0	3,0	5,0	5,0	5,0
<b>Locking monitoring</b>	no	no	no	yes	yes	yes
<b>Door monitoring</b>	no	no	no	no	no	no
<b>Mounting type</b>	surface	surface	surface	surface	surface	surface

## Mounting brackets

### for electromagnetic locks

- Mounting bracket L - for doors opened outside.
  - MG300.L for models MG300.300S, MG300.300SL
  - MG500.L for all models MG500 series
- Mounting bracket ZL - for doors opened inside.
  - MG300.ZL1 for models MG300.300S, MG300.300SL
  - MG300.ZL2 for models MG300.180SR, MG300.180MR
  - MG500.ZL for all models MG500 series
  - MSS.ZL for models MSS.750SSR, MSS.750SFR



# Standard electric deadbolt lock

## HARTTE

### SBL-series



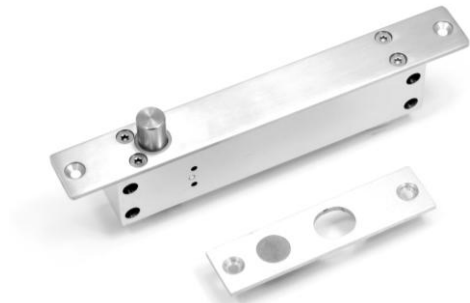
- fail-secure (NC normally closed) or fail-safe (NO normally open)
- mechanical strength – break-in resistance 8 000 N (800 kg) or 10 000 N (1000 kg)
- mechanical strength – opening cycles 500.000
- for mortise mounting vertically or horizontally (in top frame with bolt released down)
- varistor and locking monitoring built-in
- automatic relock after 5 seconds in case of no operation
- induction distance equal or below 8mm
- prevention against locking doors in incorrect position

Index	SBL12NMTL	SBL00RMT	SBL12RM
Type	NC	NO	NO
Voltage tolerance (V)	12V DC	12V-24V DC	12V DC
Power consumption (mA)	900/150	950/150 at 12V; 750/100 at 24V	950/100
Dimensions of housing with plate (mm)	260 x 30 x 48	205 x 35 x 41	205 x 35 x 41
Dimensions of mounting plate (mm)	100 x 25 x 3	90 x 25 x 2	90 x 25 x 2
Weight (kg)	1,6 kg	0,72 kg	0,72 kg
Locking monitoring	yes	yes	yes
LED signalization	no	no	no
Timer	yes	no	no
Mounting type	mortise	mortise	mortise
Mechanical emergency opening of the lock	yes	no	no

# Narrow electric deadbolt lock

## HARTTE

### XSBL-series



- fail-secure (NC normally closed) or fail-safe (NO normally open)
- mechanical strength – break-in resistance 10 000 N (1000 kg)
- mechanical strength – opening cycles 500.000
- for mortise mounting vertically or horizontally (in top frame with bolt released down)
- timer build-in (delay set on 0, 3, 6 or 9 seconds)
- varistor and monitoring built-in
- induction distance equal or below 8mm
- prevention against locking doors in incorrect position

Index	XSBL12NMT	XSBL12RMT
Type	NC	NO
Voltage tolerance (V)	12V DC	12V DC
Power consumption (mA)	960/130	960/130
Dimensions of housing with plate (mm)	192 x 25 x 37	192 x 25 x 37
Dimensions of mounting plate (mm)	100 x 25 x 3	100 x 25 x 3
Weight (kg)	0,74 kg	0,74 kg
Locking monitoring	yes	yes
LED signalization	yes	yes
Timer	yes	yes
Mounting type	mortise	mortise

solenoïd electric bolt

# Additional lock (mortise latch bolt lock)

## HARTTE

### ALR-series

- mechanical lock with adjustable latch from 0mm to 16mm
- symmetric housing, 2 assembly holes
- size: width 18mm, height 63mm, depth 37mm
- plate adjusted to aluminum doors (model ALR-A), steel doors (model ALR-S), wooden doors (ALR-W) or wooden narrow doors (ALR - WN)
- rounded plate for wooden doors, square-cut plate for metal doors
- DIN-left and DIN-right doors



### Timer

#### MG300.T

- electronic delay of locking/unlocking
- used for electric strikes and electro-magnets Hartte
- possibility to adjust time delay (0-90 sec)
- voltage 12V/24V DC
- power consumption 0,1 mA (max 1,5 A; 30V)
- starting at power on or on trigger



### Cable loop

## HARTTE

### MGL-series external

- made out of stainless steel, heads out of anodized aluminum
- length 300mm (MGL1) or 500mm (MGL2)
- loop diameter: internal 9,8mm, external 12mm



### Converters

- enable change of current/voltage
- converter DC/AC improves preload force parameter for electric strikes powered by direct current

Available models:

- CON.12 converts 24V DC into 12V DC
- CON.24 converts 12V DC into 24V DC
- CON.AC converts direct current (DC) into alternating current (AC)



## Striking plates for electric strikes

- Flat plates
  - made out of different materials: stainless steel, standard steel, anodized aluminum
  - polished, plated, galvanized, painted
  - used for wooden profiles (rounded), aluminum, steel (square-cut) or PVC
  - standard length from 110mm to 250mm
  - produced also on order
- Angle plates
  - made out of different materials: stainless steel, standard steel, anodized aluminum
  - polished, plated, galvanized, painted
  - used for wooden profiles (rounded), aluminum, steel (square-cut) or PVC
  - standard length from 150mm to 250mm
  - produced also on order
- Special plates (plates and boxes)
  - made out of different materials: stainless steel, standard steel, anodized aluminum
  - polished, plated, galvanized, painted
  - wide offer of special plates with latch bolt guide securing profile
  - for doors, lockers and furniture
  - produced also on order





# Cabinet electric lock

## HARTTE

### PU-series

- fail-secure (NC normally closed)
- size width 26mm, height 56,5mm, depth 56,5mm
- mechanical strength – break-in resistance 1500 N (150 kg)
- housing resistant to corrosion



Index	PU12	PU12	PU24	PU24
<b>Voltage (V)</b>	12AC/DC	12DC	24AC/DC	24DC
<b>Voltage tolerance (V)</b>	10-14	10-14	22-26	20-28
<b>Resistance (Ohm)</b>	13	34	74	130
<b>Power consumption AC (mA)</b>	650	-	230	-
<b>Power consumption DC (mA)</b>	920	350	330	185
<b>Max. preload AC (N)</b>	7	-	5,5	-
<b>Max. preload DC (N)</b>	4	2	5	2,5
<b>Pin length (mm)</b>	18	18	18	18
<b>Pin diameter (mm)</b>	7	7	7	7
<b>Weight (kg)</b>	0,1	0,1	0,1	0,1

# Cabinet electric lock

## HARTTE

### CBL-series

- fail-secure (NC normally closed) or fail-safe (NO normally open)
- size of the lock: depth 29mm, width 30mm, height 72,8mm
- dimensions of version with door status monitoring - depth 32 mm, width 30mm, height 94mm
- mechanical strength – break-in resistance 1500 N (150 kg)
- versatile electric lock for lockers for wide range of applications
- recommended for furniture, locker-rooms etc. including sliding doors



Index	CBL.S	CBL.M
<b>Type</b>	NC or NO	NC or NO
<b>Voltage tolerance (V)</b>	12/24V DC	12/4V DC
<b>Power consumption (mA)</b>	187	200/100
<b>Dimensions d x w x h (mm)</b>	29x30x72,8	32x30x94
<b>Dimensions - bolt (mm)</b>	40x19x35	40x19x35
<b>Lock monitoring</b>	no	yes
<b>Weight (kg)</b>	0,16	0,16



# hartte®

## REGISTERED COMPANY SEAT

Jaśminowa 1  
05-816 Michałowice  
Poland  
NIP 534 222 54 37  
Bank account number  
66 1140 2017 0000 4402 0536 3561

## PRODUCTION PLANT

Jaśminowa 1  
05-816 Michałowice  
Poland

## SALES OFFICE

Dębowa 4  
05-816 Michałowice  
Poland  
phone number +48 22 723 90 17  
Fax +48 22 300 15 67  
e-mail [hartte@hartte.com](mailto:hartte@hartte.com)  
EXPORT DEPARTMENT  
e-mail [zamowienia@hartte.com](mailto:zamowienia@hartte.com)

